

# BuzonTile2cm

By Jolani Distribution Inc.

**CLAY  
COLLECTION**

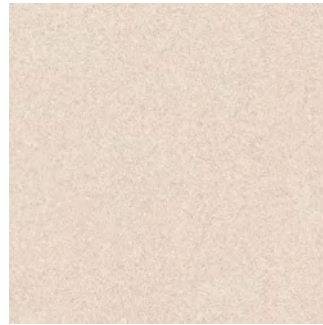
**SOLID**

23 1/2" x 23 1/2" - 60x60  
11 3/4" x 23 1/2" - 30x60

**OS**



**SABLE**



**SPECKLE**

23 1/2" x 23 1/2" - 60x60  
11 3/4" x 23 1/2" - 30x60

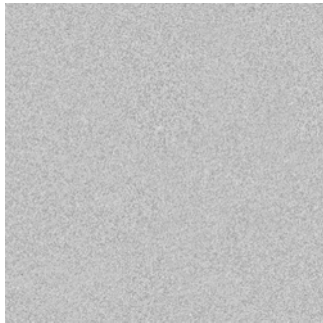
**BLANC&NOIR**



**WHITE**



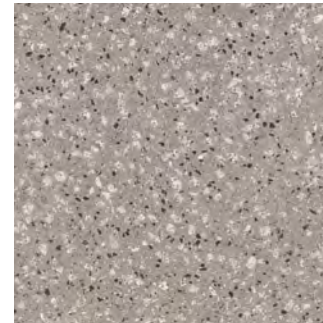
**CENDRE**



**SCOTCH**



**SMOKE**



**GREY**



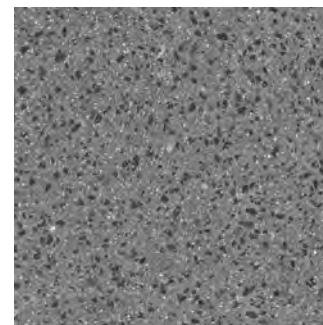
**LAVA**



**CUIR**



**COAL**





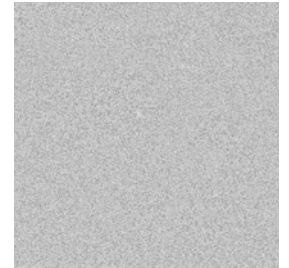


**LAYING MIX:**

**OS** 



**CENDRE** 



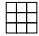
**LAVA** 







**LAYING MIX:**

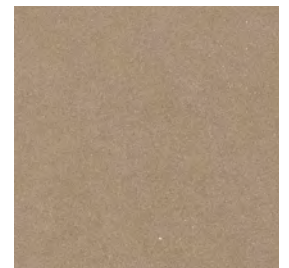
**SABLE** 



**SCOTCH** 



**CUIRE** 





**BuzonTile2cm**  
**SPECKLE**

3/4" thickness | index

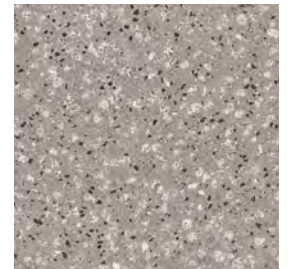


**LAYING MIX:**

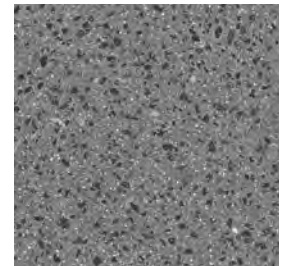
**BLANC&NOIR** 



**SMOKE** 



**COAL** 





**BuzonTile2cm**  
**SPECKLE**

3/4" thickness | index



**LAYING MIX:**

**WHITE** 



**GREY** 

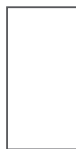


**BuzonTile2cm**  
**SOLID-7938**

3/4" thickness | index



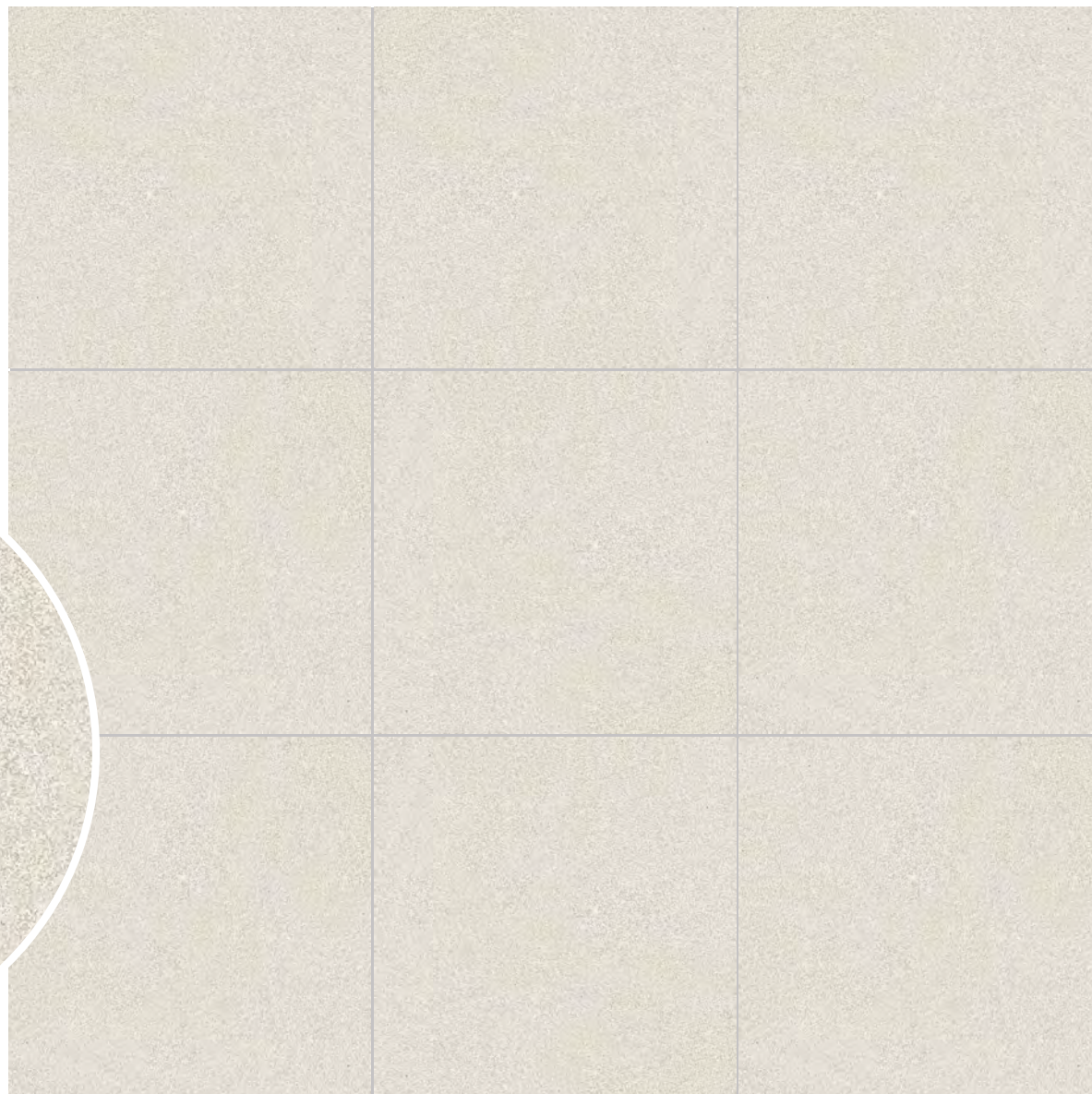
7938  
23<sup>1</sup>/<sub>8</sub>" x 23<sup>1</sup>/<sub>8</sub>" rectified  
60x60 cm



1100032  
11<sup>3</sup>/<sub>4</sub>" x 23<sup>1</sup>/<sub>8</sub>" rectified  
30x60 cm



**Os**



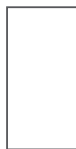


**BuzonTile2cm**  
**SOLID-7937**

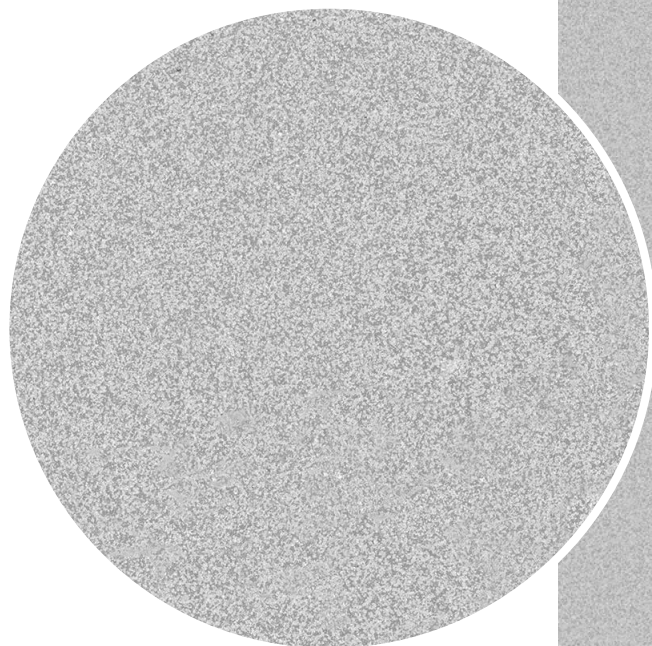
3/4" thickness | index



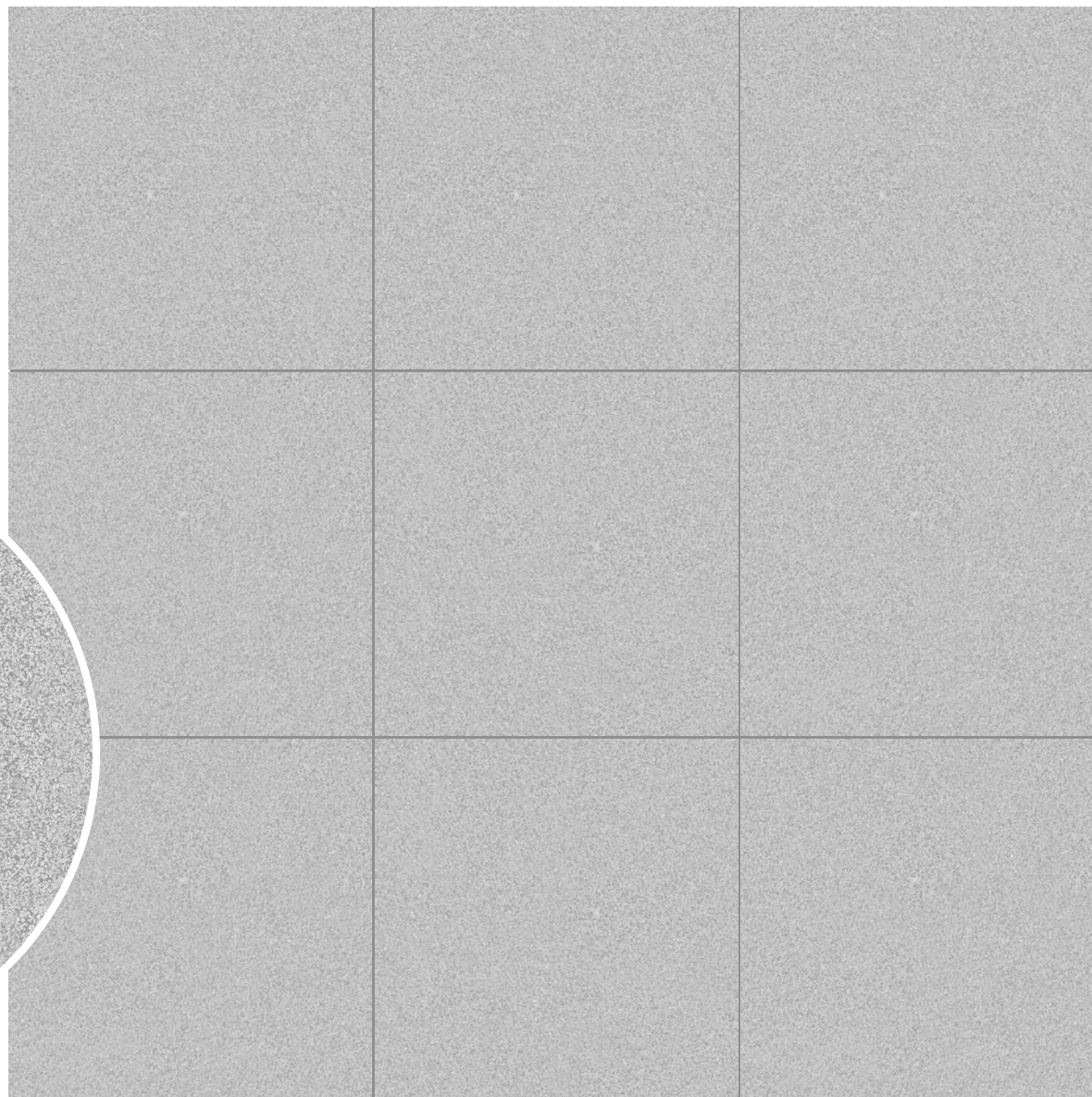
7937  
23<sup>1</sup>/<sub>8</sub>" x 23<sup>1</sup>/<sub>8</sub>" rectified  
60x60 cm



1100031  
11<sup>3</sup>/<sub>4</sub>" x 23<sup>1</sup>/<sub>8</sub>" rectified  
30x60 cm



**CENDRE**



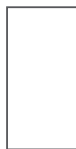


**BuzonTile2cm**  
**SOLID-7936**

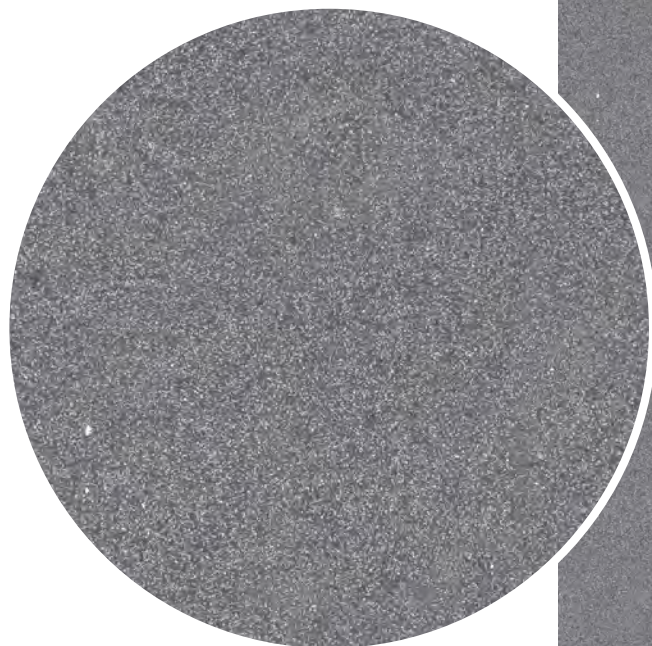
3/4" thickness | index



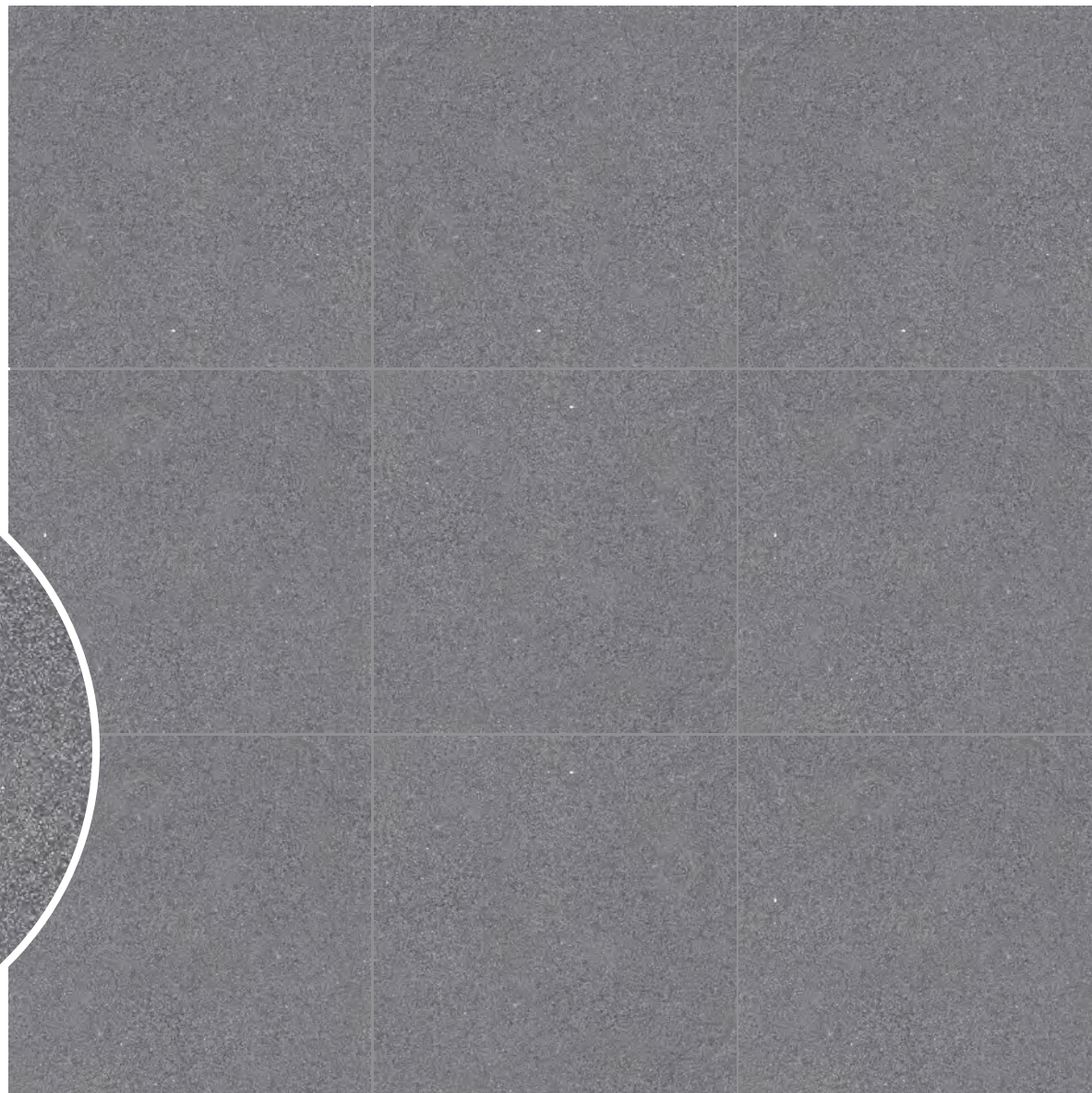
7936  
23<sup>1</sup>/<sub>8</sub>" x 23<sup>1</sup>/<sub>8</sub>" rectified  
60x60 cm



1100030  
11<sup>3</sup>/<sub>4</sub>" x 23<sup>1</sup>/<sub>8</sub>" rectified  
30x60 cm



**LAVA**



**BuzonTile2cm**  
**SOLID-7935**

3/4" thickness | index



7935  
23 1/8" x 23 1/8" rectified  
60x60 cm



1100029  
11 3/4" x 23 1/8" rectified  
30x60 cm



**SABLE**





**BuzonTile2cm**  
**SOLID-7934**

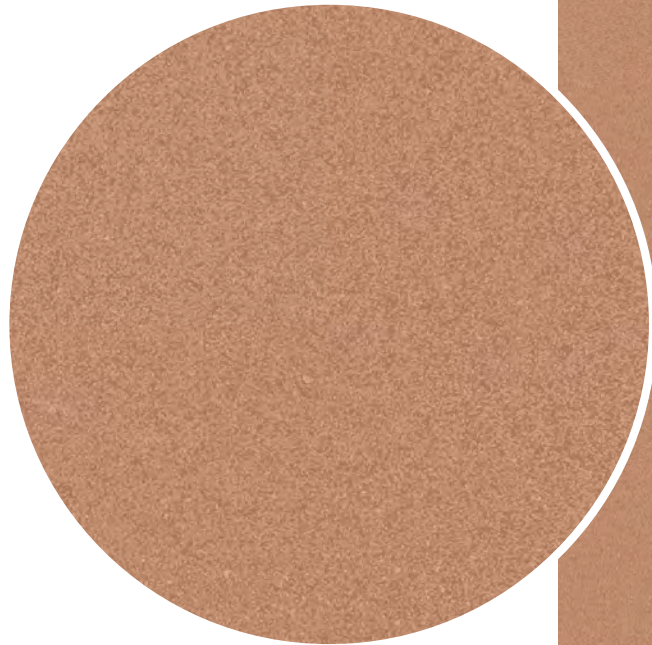
3/4" thickness | index



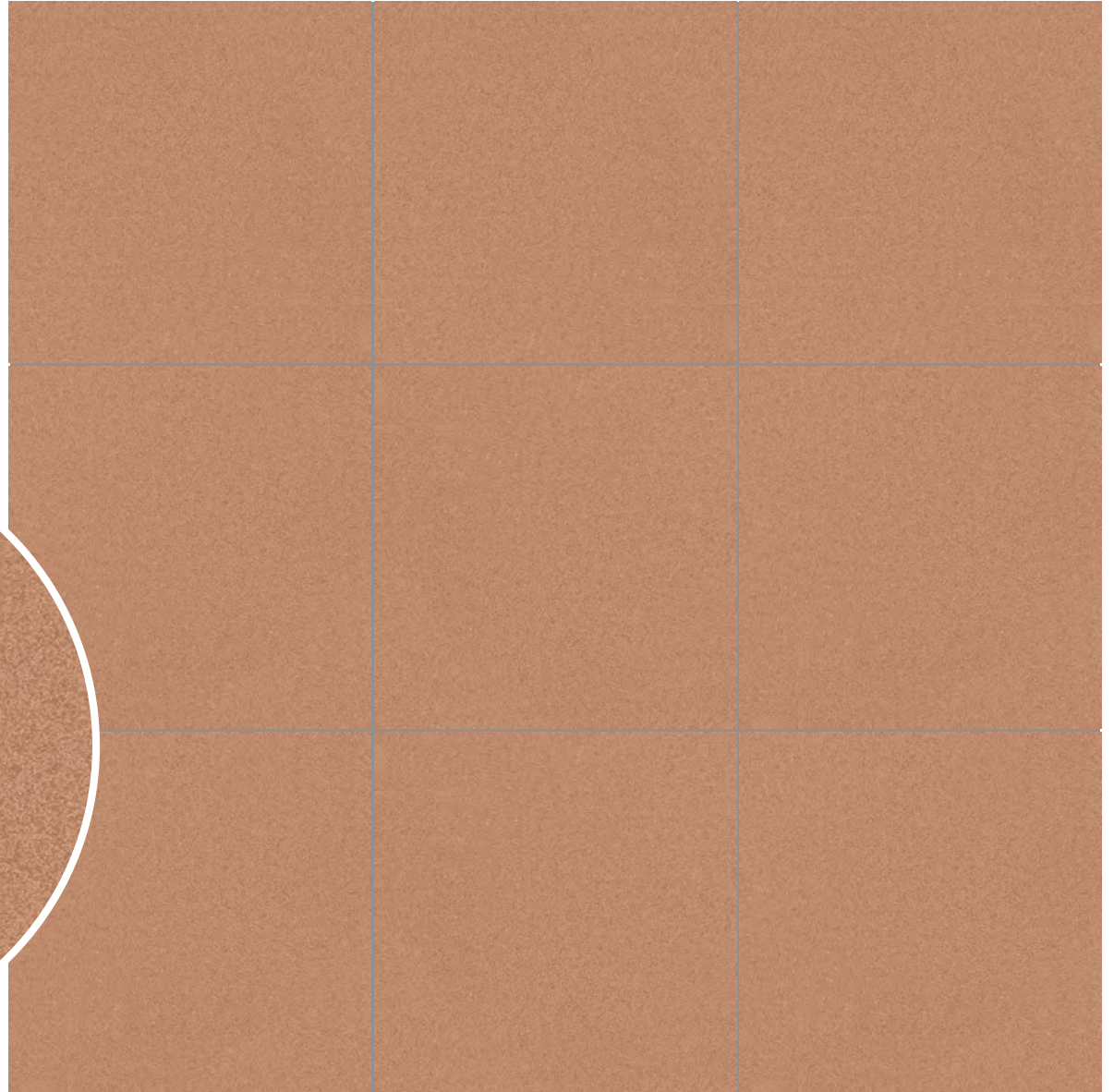
7934  
23<sup>1</sup>/<sub>8</sub>" x 23<sup>1</sup>/<sub>8</sub>" rectified  
60x60 cm



1100028  
11<sup>3</sup>/<sub>4</sub>" x 23<sup>1</sup>/<sub>8</sub>" rectified  
30x60 cm



**SCOTCH**



**BuzonTile2cm**  
**SOLID-7939**

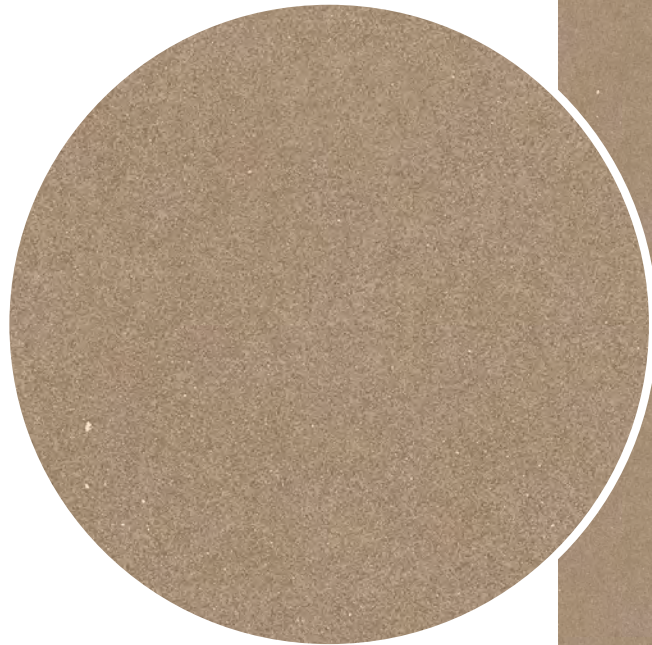
3/4" thickness | index



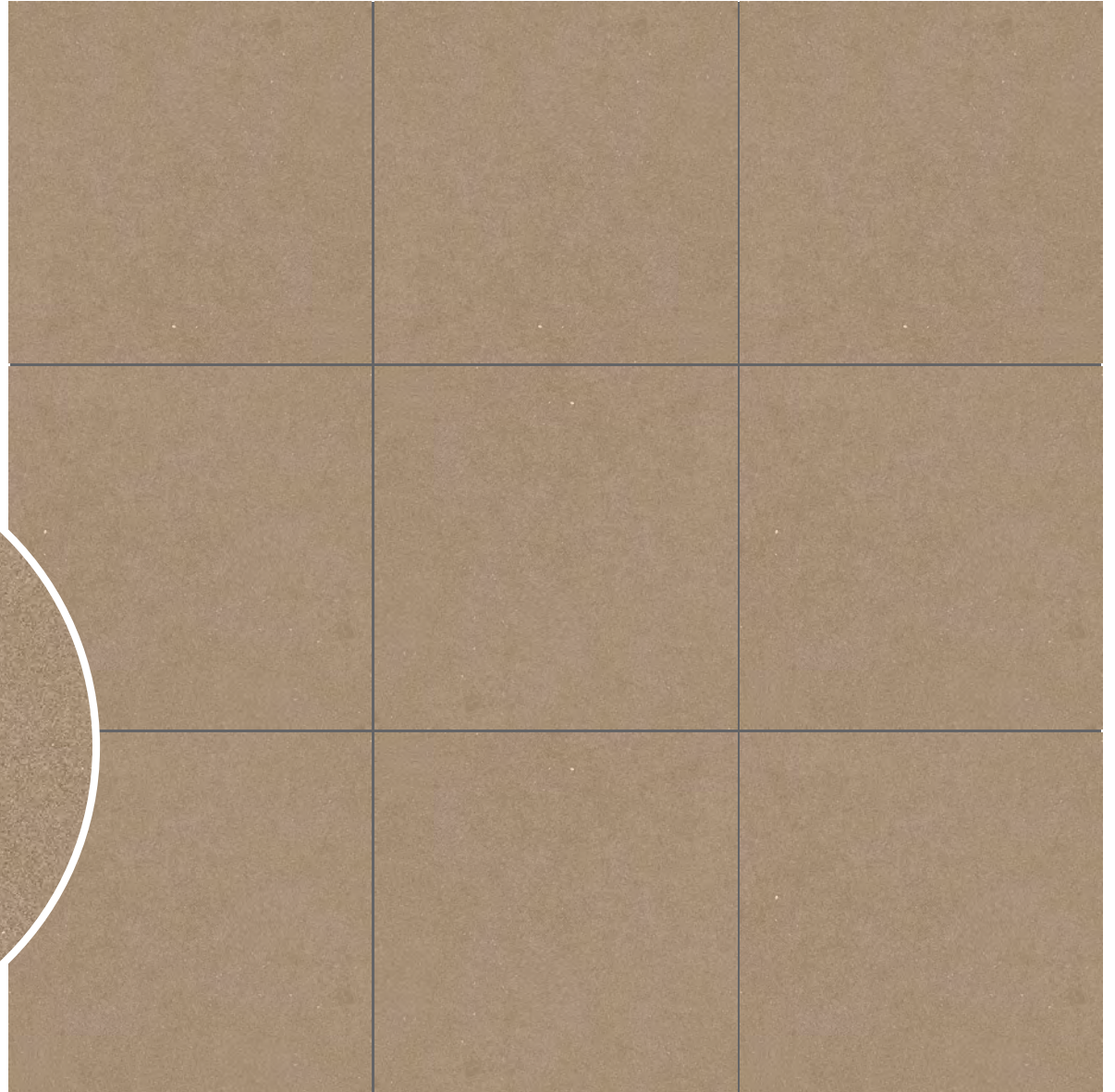
7939  
23 1/8" x 23 1/8" rectified  
60x60 cm



1100033  
11 3/4" x 23 1/8" rectified  
30x60 cm



**CUIR**



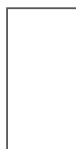


**BuzonTile2cm**  
**SPECKLE-7933**

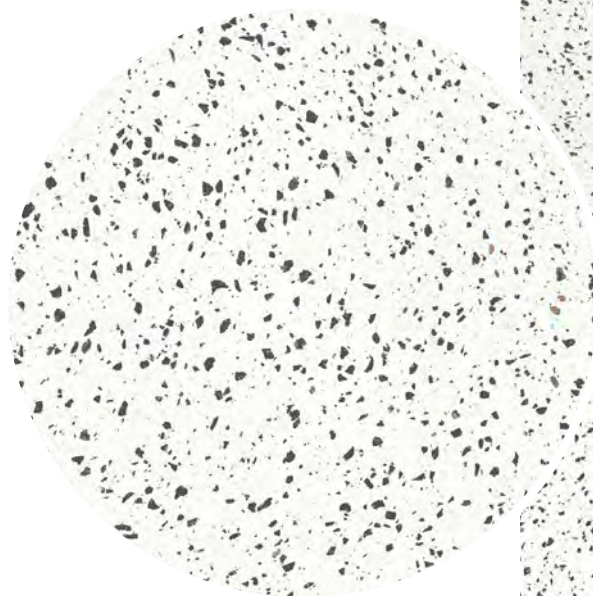
3/4" thickness | index



7933  
23<sup>1</sup>/<sub>8</sub>" x 23<sup>1</sup>/<sub>8</sub>" rectified  
60x60 cm



1100027  
11<sup>3</sup>/<sub>4</sub>" x 23<sup>1</sup>/<sub>8</sub>" rectified  
30x60 cm



***SPECKLE - BLANC&NOIR***



**BuzonTile2cm**  
**SPECKLE-7932**

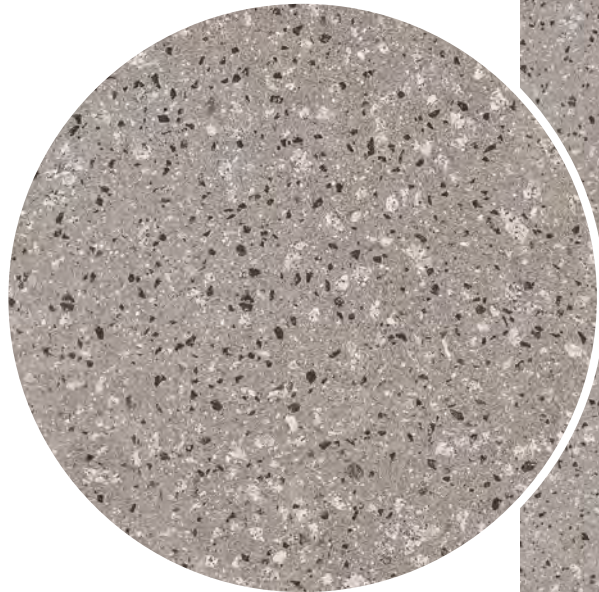
3/4" thickness | index



7932  
23<sup>1</sup>/<sub>8</sub>" x 23<sup>1</sup>/<sub>8</sub>" rectified  
60x60 cm



1100026  
11<sup>3</sup>/<sub>4</sub>" x 23<sup>1</sup>/<sub>8</sub>" rectified  
30x60 cm



**SMOKE**





**BuzonTile2cm**  
**SPECKLE-7931**

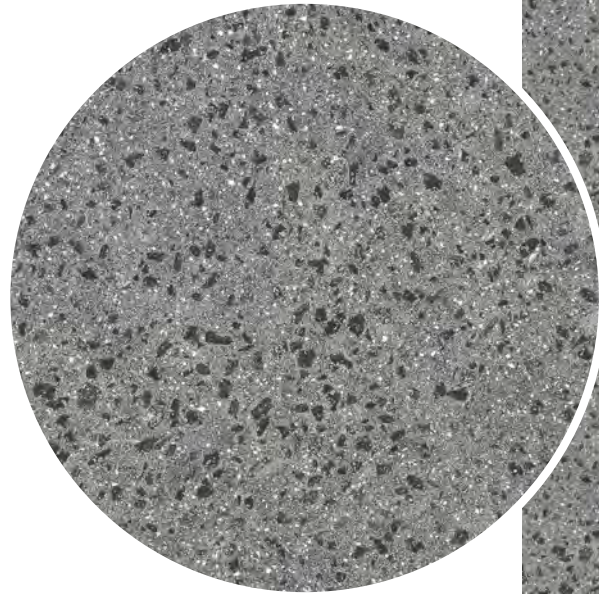
3/4" thickness | index



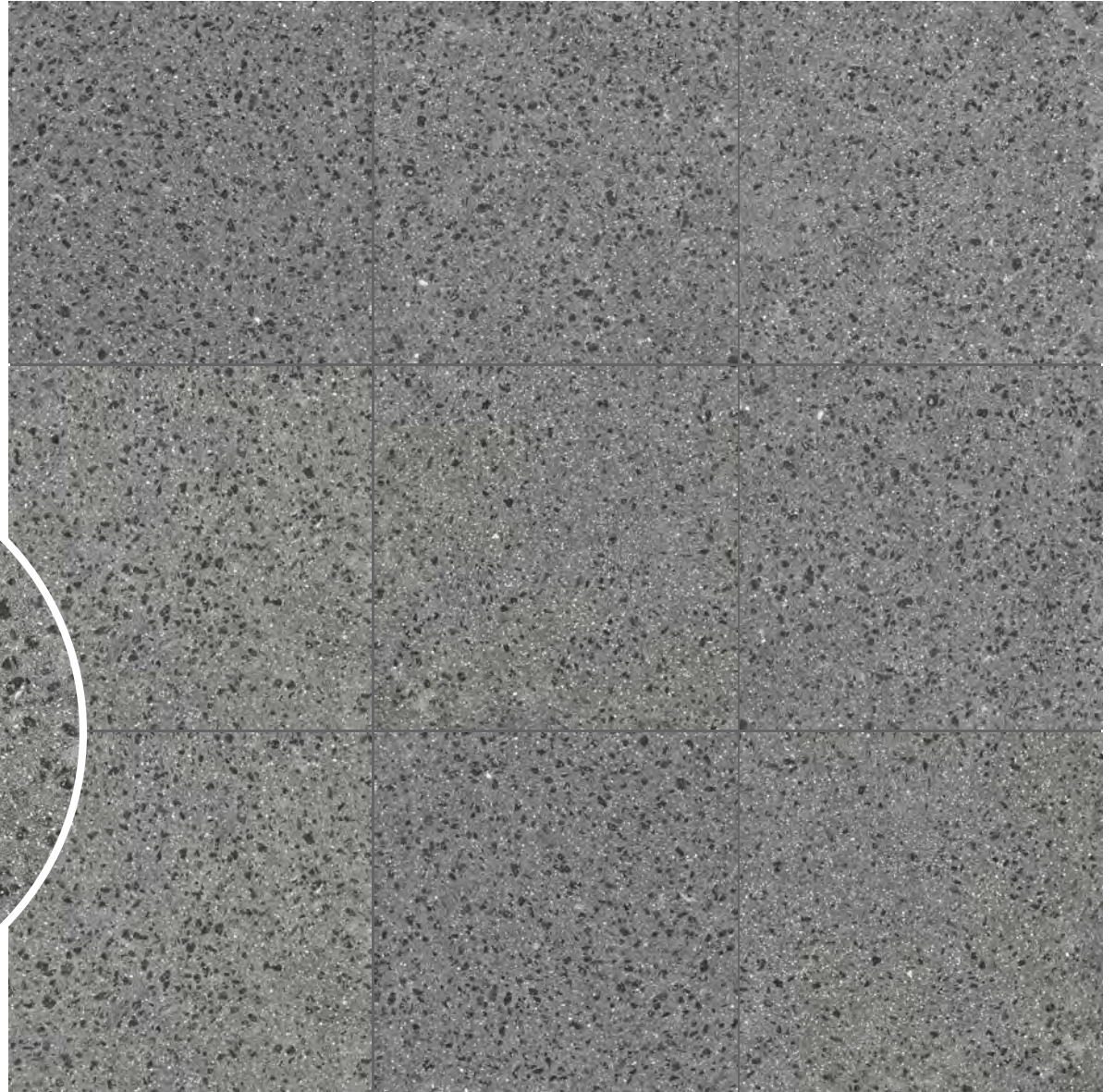
7931  
23<sup>1</sup>/<sub>8</sub>" x 23<sup>1</sup>/<sub>8</sub>" rectified  
60x60 cm



1100025  
11<sup>3</sup>/<sub>4</sub>" x 23<sup>1</sup>/<sub>8</sub>" rectified  
30x60 cm



**COAL**



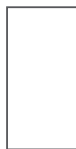


**BuzonTile2cm**  
**SPECKLE-7929**

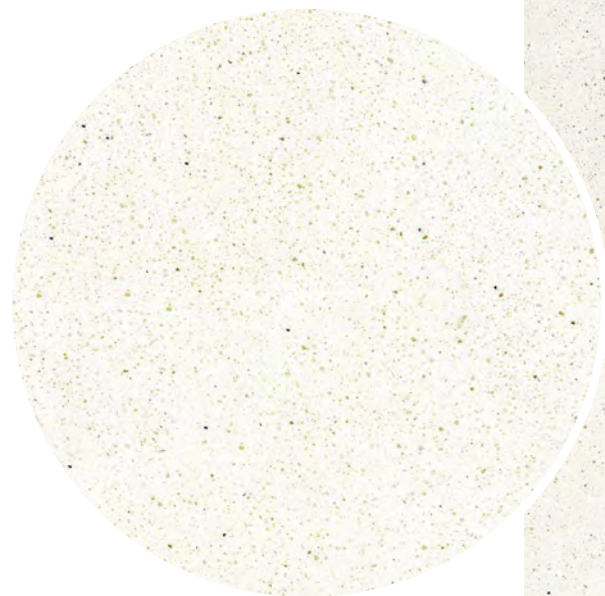
3/4" thickness | index



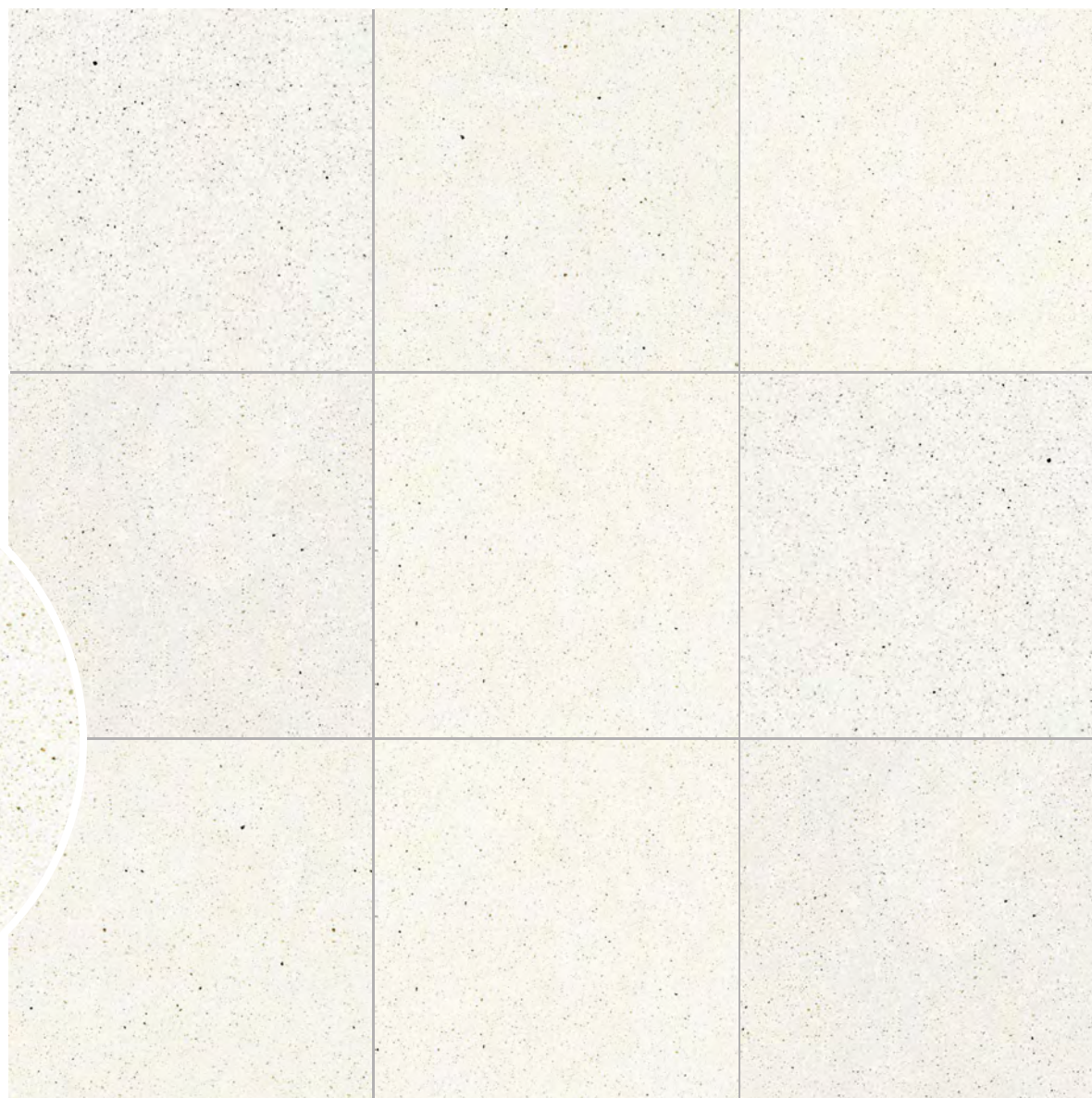
7929  
23<sup>1</sup>/<sub>8</sub>" x 23<sup>1</sup>/<sub>8</sub>" rectified  
60x60 cm



1100023  
11<sup>3</sup>/<sub>4</sub>" x 23<sup>1</sup>/<sub>8</sub>" rectified  
30x60 cm



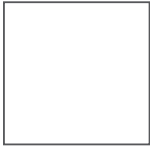
**WHITE**





**BuzonTile2cm**  
**SPECKLE-7930**

3/4" thickness | index



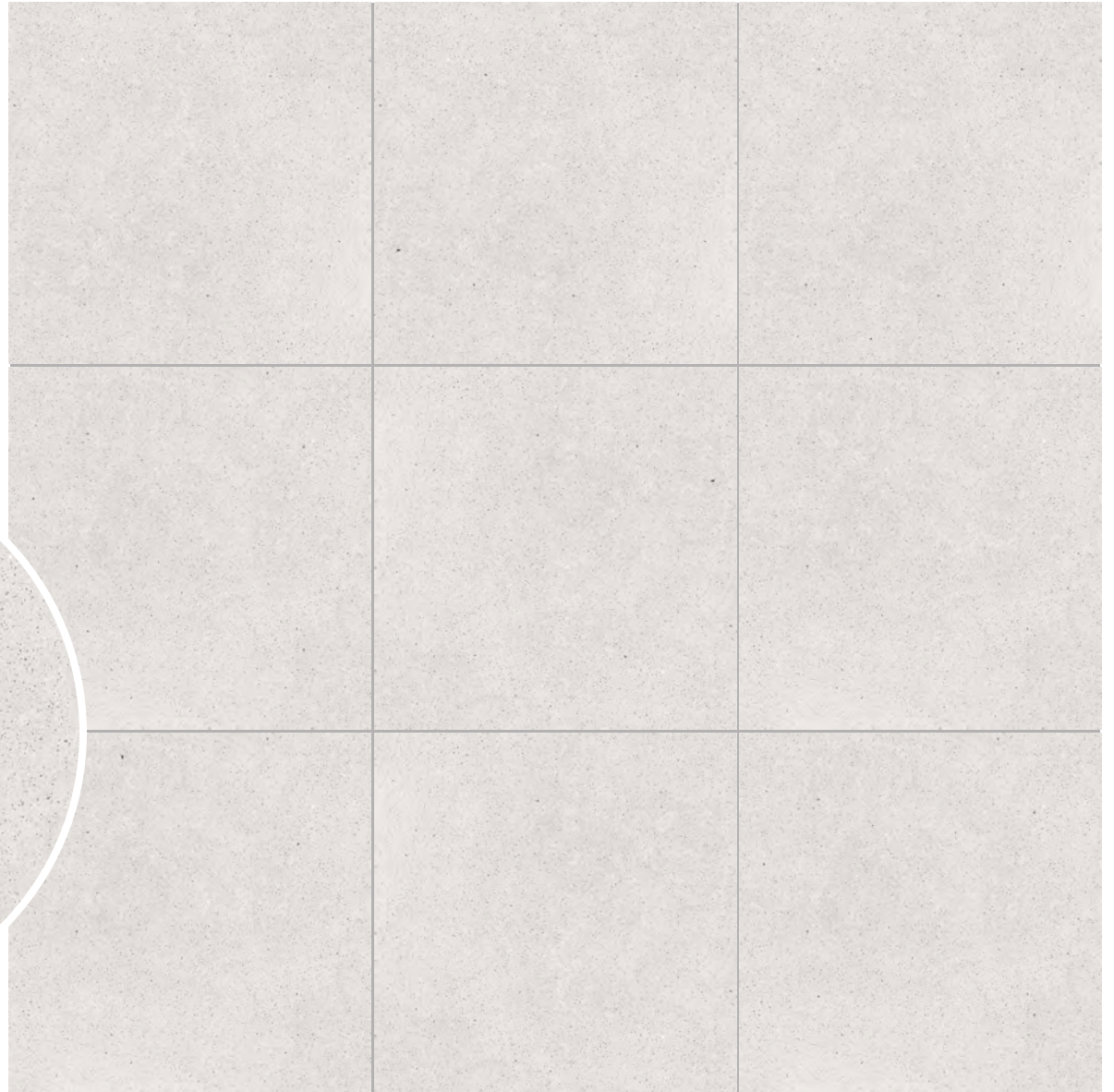
7930  
23 1/8" x 23 1/8" rectified  
60x60 cm



1100024  
11 3/4" x 23 1/8" rectified  
30x60 cm



**GREY**



# TECHNICAL CHARACTERISTICS

STANDARDS	CHARACTERISTICS OR PROPERTIES	COMPLIANCE WITH STANDARDS UNI EN 14411 G wASTM	DECLARED VALUE
ISO - 10545-3 ASTM - C 373-88	Water absorption	E < = 0.5 %	< 0.1 %
ISO - 10545-9 ASTM - C 484	Thermal shock resistance	Requested	Complies with standard
ISO - 10545-12 ASTM - C 1026	Frost resistance	Requested	Complies with standard
ISO - 10545-6 ASTM C - 1243-93	Abrasive wear	<175 mm <sup>2</sup>	139 mm <sup>2</sup>
ISO - 10545-2	Straightness / ASTM - C 485	+/- 0.75 % (+/- 1.8 mm)	Complies with standard
	Straightness / ISO - 10545-2	+/- 0.5 % (+/- 1.5 mm)	Complies with standard
	Thickness / ASTM - C 499	+/- 1.02 mm	Complies with standard
	Thickness / ISO - 10545-2	+/- 0.5 % (+/- 0.5 mm)	Complies with standard
	Length and width / ASTM - C 499	+/- 0.5 % (+/- 2.0 mm)	Complies with standard
	Length and width / ISO - 10545-2	+/- 0.6 % (+/- 2.0 mm)	Complies with standard
ISO - 10545-4 Bending strength in N (thickness > = 7.5 mm)	ASTM - C 648	> = 250 LBF Average	> = 225 LBF Individual
	ISO - 10545-4	> = 13000 Newton	> 13000
ASTM - C 650	Chemical resistance	As reported	Resistant
ISO 10545-14	Resistance to stain	-	5
ISO 10545-13	Chemical resistance	UB min.	UA ULA UHA
ISO 10545-8	Coefficient of linear thermal-expansion	-	$\alpha=6.3 \times 10^{-6} \text{ } ^\circ\text{C}^{-1}$
ISO 10545-5	Impact resistance	-	0.88
EN 12825	Static load	-	Centre 9.6 Kn Centre point of sides 6.5 Kn Diagonal 8.19 Kn (CLASSE 3)
	Dymanic laod capacity - hand object impact test	-	Test not passed
	Dymanic laod capacity - soft object impact test	-	Test passed
EN 1339	Bendind strength - breaking force in N	Kn 14.38	classe 14
ENV 12633	Slip resistance	> / = CL1	CL 2
DIN 51130	Slip resistance	-	R11
DIN 51097	Slip resistance	-	A + B + C min.
DM 236/89 B.C.R.A.	Slip resistance	-	> 0.40
Static coefficient of friction ASTM 1028-07 BOT 3000 Dynamic coefficient of friction (sectio n 9.6 ANSIA 137.1 2012)	Slip resistance	-	> 0.60 WET > 0.60 DRY > = 0.42
EN 13501-1	Fire resistance	-	A1 - A1 FL
* TAS 108 FLORIDA BUILDING CODE WIND UP LIFT TEST	3/4" thick 24"x24" porcelain installed on fixed height pedestals and 45° wind angle was blow of at	-	130 mph with no parapet 150 mpt with 12" high parapet



# PACKAGING

3/4" thickness | index

2.0 MONOLITHIC RECTIFIED CERAMIC TILE	Thickness	Unit / Box	SqFt / Box	Boxes / Pallet	SqFt / Pallet	Weight / Box	Weight / M <sup>2</sup>	Weight / SqFt	Weight / Pallet (included)	Pallet Size
23 1/2"x23 1/2"	3/4" - 20mm	2	7.75	36	279	72 lb	100 lb	9,3 lb	2670 lb	42"x 42"
11 3/4"x23 1/2"	3/4" - 20mm	4	7,75	40	310	72 lb	100 lb	9,3 lb	2955 lb	42"x42"

# BuzonTile2cm

By Jolani Distribution Inc.

8151, Boul. Montreal-Toronto, Suite 102  
Montreal-Ouest, Quebec H4X 1N1  
Tel: 514-381-0098 Fax: 514-381-6496  
Email: [info@jolanidistributioninc.com](mailto:info@jolanidistributioninc.com)