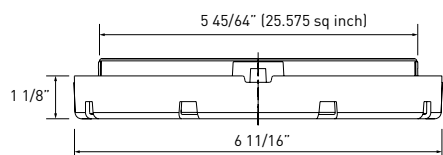
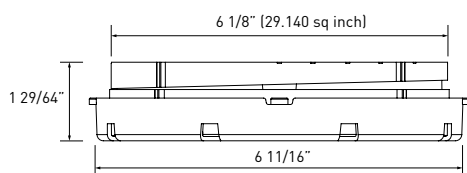


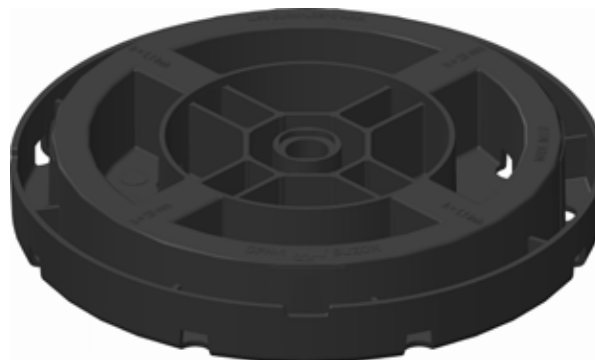
DPH-1 - height 1 1/8"



DPH-1 (28mm)



DPH-1+PH5 (37mm)



Height range

1 1/8", fixed height.

Addition of PH5 slope corrector gives 0-5% slope correction.

Height with PH5: 1 29/64".

Material

Co-polymer polypropylene (CPP), material thickness 1/16" to 13/64".

Composition: 80% CPP **recycled**, 20% talc + UV master batch black, and 100% recyclable.

Base dimensions

Base - diameter 6 11/16", surface area 35.185 sq inch.

Top - diameter 5 45/64", surface area 25.575 sq inch.

Performance characteristics

Resistant to aging, poor weather conditions, UV light, almost all chemicals, and rot proof.

Suitable for use in temperatures from -22°F to + 194°F.

Application

Support for raised decks. Can support any type of timber decking or ceramic, stone, concrete paving or flag material, as well as fibreglass or metal grid panels.

Suitable for any kind of stable substrate, including applications directly over insulation panels.

Slope corrector PH5

Can be simply and quickly fitted to the pedestal. Provides slope correction from

0-5% (in 0.5% increments). Adds 23/64" to the overall height of the pedestal.



Accessories

Spacer tabs: For achieving uniform spaces between used decking material. Available in 1/16, 1/8, 3/16, 1/4, 5/16 and 25/64 Inches. Fixed to top of pedestal by clipping in only. Tab heights: 11/16" or 1" dependent on tile thickness.



Available with tab widths of 1/16, 3/16, 1/4, 5/16 and 25/64 Inches



Available with tab widths of 1/8 and 3/16 Inches

Joist support: Supports timber, aluminium or composite joists for most decking systems.



Joist max. 2 9/16" Thickness 5/32"

Shim: Enhances acoustic performance and can help leveling uneven paving materials.



1/32" and 1/16" thickness

EPDM -60 Shore

Load capacity (1 daN = 1kg/f = 2.23lb/f)

Tests executed with load bearing on central (1/1), half (1/2) and quarter (1/4) position on the pedestal.

Position	Load (daN)	Load (lbf)
1/1	5225	11652
1/2	2410	5374
1/4	1362	3038

Safety recommendation for use of Buzon Pedestals System :

1. Areas reserved for pedestrian access : divide the load indicated in the table by 2 with an addition safety factor of -15%.
2. Areas reserved for industrial and technical applications : divide the load indicated in the table by 4 with an addition safety factor of -15%.
3. The BUZON Pedestals System is not designed to support or be subjected to vibrating and/or moving machinery & equipment, including maintenance & cleaning vehicles, automobile & other vehicles, etc...



Buzon Pedestal International s.a./n.v.

Z.I. des Hauts-Sarts - Prolongement de l'Abbaye, 134 - B-4040 Herstal - Belgique

Tel +32 (0) 4 248 39 83 Fax +32 (0) 4 264 82 38 E-mail info@buzon-world.com www.buzon-world.com